



# 品质瓷砖 产品购买指南

PRODUCT PURCHASE GUIDE

售前产品库



## CERAMIC TILES

### 负离子通体系列

Size:800x800mm

外观厚重凝视，整体的色调闪耀着尊贵大气，  
脉络自然流畅如真的纹理，一丝不苟的展现  
着细腻如真的纹理。  
这是对生活的追求，对品味的信仰

适用空间：客餐厅、厨房、卫生间、客厅餐厅卧室、书房、餐馆、咖啡厅等商业场所  
适用风格：现代简约、现代欧式、新中式、简欧、北欧

负离子通体大理石  
Ceramic tiles

CERAMIC TILES



SK814TT 半岛  
Size:800x800mm



TT813 雅珀  
Size:800x800mm



SK810TT 金丝玉石  
Size:800x800mm



效果图应用：  
· 地砖：TT034卡拉卡白



效果图应用：  
· 地砖：TT081意大利灰木纹



TT081 意大利灰木纹  
Size: 800x800mm



TT078 塞纳印象米黄  
Size: 800x800mm



TT073 玛雅灰  
Size: 800x800mm



TT071 雅典娜灰  
Size: 800x800mm



TT057 冰岛  
Size: 800x800mm



TT056 索菲特金  
Size: 800x800mm



TT054奥特曼米黄  
Size:800x800mm



TT052卡布奇诺  
Size:800x800mm



TT051一米阳光  
Size:800x800mm



TT049雅士白  
Size:800x800mm



TT035古堡灰  
Size:800x800mm



TT034卡拉卡白  
Size:800x800mm



TT032保加利亚灰  
Size:800x800mm



TT030巴西米黄  
Size:800x800mm



TT005金象牙  
Size:800x800mm



TT004帕斯高灰  
Size:800x800mm



T8898A熊猫白  
Size:800x800mm



T8896A雪山白  
Size:800x800mm

负离子通体大理石  
Ceramic tiles

CERAMIC TILES



T8849A 爵士灰  
Size:800x800mm



T8837A 鹅绒米灰  
Size:800x800mm



T8836A 阿尔卑斯灰  
Size:800x800mm



效果图应用：  
• 地砖：T8849A 爵士灰



效果图应用：  
• 地砖：T8831A雅仕灰



T8833A 索芙特金  
Size: 800x800mm



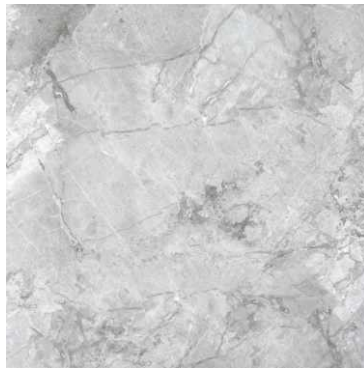
T8831A 雅仕灰  
Size: 800x800mm



T8805A 撒哈拉浅灰  
Size: 800x800mm



T8801A 撒哈拉深灰  
Size: 800x800mm



SK832TT 卡罗地亚灰  
Size: 800x800mm

负离子通体大理石加厚  
Ceramic tiles Thickening

CERAMIC TILES



SK8HT02A卡斯  
Size:800x800mm



SK8HT08A奥尼灰  
Size:800x800mm



SK8HT09A希腊白  
Size:800x800mm



效果图应用：  
• 地砖：SK8HT10A雅尔斯灰



负离子通体大理石加厚  
Ceramic tiles Thickening

CERAMIC TILES



SK8HT11A英伦幻彩  
Size:800x800mm



SK8HT15A伯爵灰  
Size:800x800mm



SK8HT16A富士山白  
Size:800x800mm



效果图应用：  
• 地砖：SK8HT11A英伦幻彩



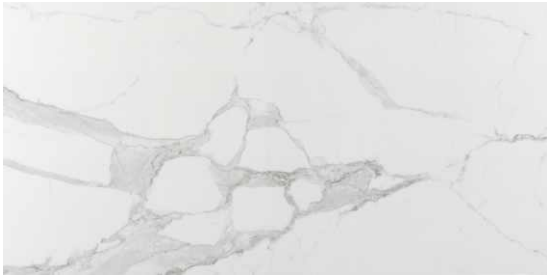
## CERAMIC TILES

### 负离子通体系列

Size:600x1200mm

外观厚重凝视，整体的色调闪耀着尊贵大气，  
脉络自然流畅如真的纹理，一丝不苟的展现  
着细腻如真的纹理。  
这是对生活的追求，对品味的信仰

适用空间：客餐厅、厨房、卫生间、客厅餐厅卧室、书房、餐馆、咖啡厅等商业场所  
适用风格：现代简约、现代欧式、新中式、简欧、北欧



JD126030鱼肚白  
Size:600x1200mm



JD126031古堡灰  
Size:600x1200mm



JD126033帝诺米黄  
Size:600x1200mm



JD126035半岛  
Size:600x1200mm

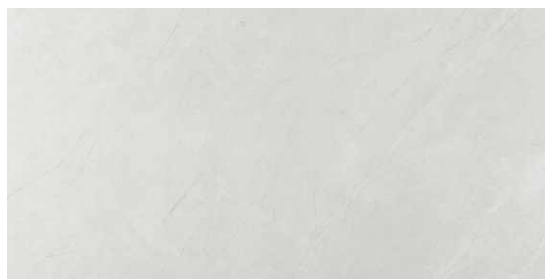




效果图应用：  
· 地砖：**JD126039凯撒深灰**



JD126036水墨灰  
Size:600x1200mm



JD126037保加利亚浅灰  
Size:600x1200mm



JD126038凯撒浅灰  
Size:600x1200mm



JD126039凯撒深灰  
Size:600x1200mm



JD126040保加利亚深灰  
Size:600x1200mm



JD126042玛雅灰  
Size:600x1200mm



JD126043保加利亚金黄  
Size:600x1200mm



JD126047雅士白  
Size:600x1200mm





效果图应用：  
· 地砖：612T109莫卡灰



612T71P宝龙灰  
Size:600x1200mm



612T80P柯林灰  
Size:600x1200mm



612T109莫卡灰  
Size:600x1200mm



带凹凸肌理纹

612T49P雅士白  
Size:600x1200mm

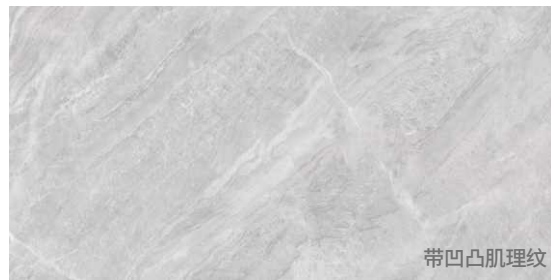


效果图应用：  
· 地砖：612T108P里约灰



带凹凸肌理纹

612T85P卡迪  
Size:600x1200mm



带凹凸肌理纹

612T108P里约灰  
Size:600x1200mm



带凹凸肌理纹

612T149P波斯灰  
Size:600x1200mm



带凹凸肌理纹

612T73P凯萨岩  
Size:600x1200mm



## CERAMIC TILES

### 负离子通体系列

Size:400x800mm

外观厚重凝视，整体的色调闪耀着尊贵大气，  
脉络自然流畅如真的纹理，一丝不苟的展现  
着细腻如真的纹理。  
这是对生活的追求，对品味的信仰

适用空间：客餐厅、厨房、卫生间、客厅餐厅卧室、书房、餐馆、咖啡厅等商业场所  
适用风格：现代简约、现代欧式、新中式、简欧、北欧





效果图应用：  
· 地砖：48YD003F似水流年



48YD019F白玉兰  
Size:400x800mm



48YD005F保加利亚灰  
Size:400x800mm



48YD002F卡拉卡白  
Size:400x800mm



48YD031F欧亚木纹  
Size:400x800mm



48YD066F闪电灰  
Size:400x800mm



48YD003F似水流年  
Size:400x800mm



48YD128F索芙特金  
Size:400x800mm



效果图应用：  
墙砖：4830A卡洛灰



4803A闪电灰  
Size:400x800mm



4804A帝诺  
Size:400x800mm



4805A雅士白  
Size:400x800mm



4806A保利灰  
Size:400x800mm



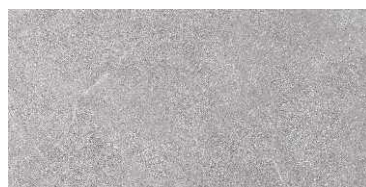
4809A富士白  
Size:400x800mm



4810A英伦  
Size:400x800mm



4803A闪电灰  
Size:400x800mm



4803A闪电灰  
Size:400x800mm



4803A闪电灰  
Size:400x800mm



效果图应用：  
墙砖：4830A卡洛灰



4830A卡洛灰  
Size:400x800mm



4804A帝诺  
Size:400x800mm



4882A凯特米黄  
Size:400x800mm



## ANION DIAMOND

### 负离子通体金刚晶

Size:800x800mm

外观厚重凝视，整体的色调闪耀着尊贵大气，  
脉络自然流畅如真的纹理，一丝不苟的展现  
着细腻如真的纹理。  
这是对生活的追求，对品味的信仰

适用空间：客餐厅、厨房、卫生间、客厅餐厅卧室、书房、餐馆、咖啡厅等商业场所  
适用风格：现代简约、现代欧式、新中式、简欧、北欧

负离子通体金刚晶  
Anion diamond

ANION DIAMOND



SK8ZF01A 爵士白  
Size:800x800mm



SK8ZF05A 闪电米黄  
Size:800x800mm



SK8ZF06A 冰岛白玉  
Size:800x800mm



效果图应用：  
• 地砖: SK8ZF01A 爵士白

负离子通体金刚晶  
Anion diamond

ANION DIAMOND



SK8ZF09A欧亚木纹  
Size:800x800mm



SK8ZF11A莎安娜米黄  
Size:800x800mm



SK8ZF12A月光米黄  
Size:800x800mm



效果图应用：  
• 地砖：SK8ZF05A闪电米黄

负离子通体金刚晶  
Anion diamond

ANION DIAMOND



SK8ZF13A保加利亚浅灰  
Size:800x800mm



SK8ZF15A木纹白玉  
Size:800x800mm



SK8ZF17A缅甸玉  
Size:800x800mm



效果图应用：  
• 地砖：SK8ZF17A缅甸玉



## ANION DIAMOND

### 负离子通体金刚晶

Size:600x1200mm

外观厚重凝视，整体的色调闪耀着尊贵大气，  
脉络自然流畅如真的纹理，一丝不苟的展现  
着细腻如真的纹理。  
这是对生活的追求，对品味的信仰

适用空间：客餐厅、厨房、卫生间、客厅餐厅卧室、书房、餐馆、咖啡厅等商业场所  
适用风格：现代简约、现代欧式、新中式、简欧、北欧





效果图应用：  
· 地砖：SK612A28GA古堡灰



SK612A02GA可西亚白  
Size:600x1200mm



SK612A09GA保加利亚浅灰  
Size:600x1200mm



SK612A16GA闪电灰  
Size:600x1200mm

负离子通体金刚晶  
Anion diamond

ANION DIAMOND



TA61230阿尔卑斯白  
Size:600x1200mm



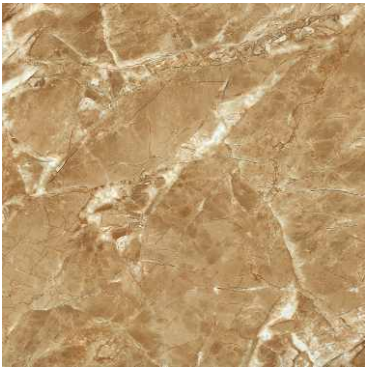
SK612A28GA古堡灰  
Size:600x1200mm



效果图应用：  
• 地砖：SK612A02GA可西亚白



效果图应用：  
• 地砖：SK862TT威尼斯灰



SK803TTC 金沙萨  
Size:800x800mm



SK816TT 金砂  
Size:800x800mm



SK852TT 克罗雅灰  
Size:800x800mm



SK862TT 威尼斯灰  
Size:800x800mm



SK867TT 花岗岩  
Size:800x800mm



SK871TT 罗马朗格  
Size:800x800mm

通体大理石大板系列800x1600  
Uniform marble slab

LARGE SLAB BRICK



TD168001细根-雪花白四合一  
Size:800x1600mm



Td168002大根雪花白四合一  
Size:800x1600mm



TD168003-1-2熊猫白AB面-四合一  
Size:800x1600mm



Td168005阿玛尼灰  
Size:800x1600mm



Td168006棕色普佩斯  
Size:800x1600mm



Td168007保加利亚(深)  
Size:800x1600mm



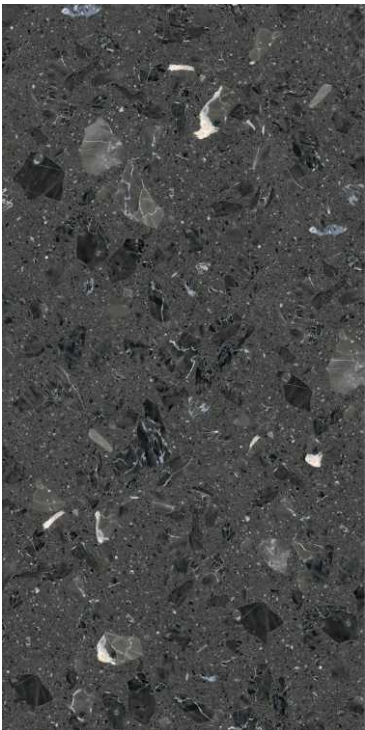
Td168008保加利亚 (浅灰)  
Size:800x1600mm



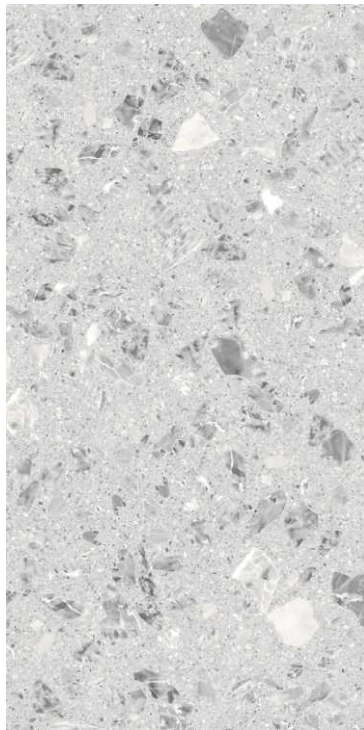
Td168009意大利卡拉拉灰  
Size:800x1600mm



Td168010布雷西亚蓝  
Size:800x1600mm



Td168011水磨石 (深色)  
Size:800x1600mm



Td168012水磨石 (浅色)  
Size:800x1600mm



Td168013意大利黑白根  
Size:800x1600mm

通体大理石大板系列750x1500  
Uniform marble slab

LARGE SLAB BRICK



G71521 古堡灰  
Size: 750x1500mm



JD75014 帝雅灰  
Size: 750x1500mm



JT75015 凯萨岩  
Size: 750x1500mm



JT75016 柏斯灰  
Size: 750x1500mm



JT75018 卡拉卡白  
Size: 750x1500mm



JT75019 雨果灰  
Size: 750x1500mm

通体大理石大板系列750x1500  
Uniform marble slab

LARGE SLAB BRICK



G71599特斯拉  
Size:750x1500mm



JD75017星辰灰  
Size:750x1500mm



JT75020云堡米黄  
Size:750x1500mm



JT75021云雾灰  
Size:750x1500mm



JT75026维纳斯  
Size:750x1500mm

通体大理石系列400x400  
Uniform marble slab

LARGE SLAB BRICK



BM4002雅士白  
Size:400x400mm



BM4003巴西米黄  
Size:400x400mm



BM4005塞纳印象  
Size:400x400mm



BM4006古堡灰  
Size:400x400mm



BM4007玛雅灰  
Size:400x400mm



BM4008雅仕灰  
Size:400x400mm



效果图应用：  
• 地砖：BM4002  
• 墙砖：4809A (400x800)



**柔光通体大理石**  
Flexible smooth marble

**FLEXIBLE SMOOTH MARBLE**



**8RD101卡布奇诺**  
Size:800x800mm



**8RD02萨尔茨堡灰**  
Size:800x800mm



**8RD044塞纳时光**  
Size:800x800mm



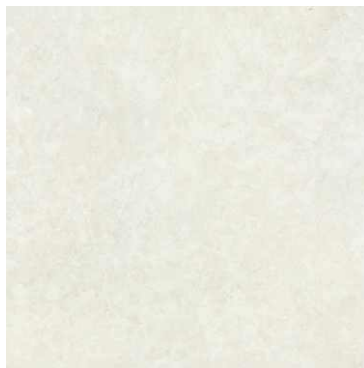
**8RD055木纹白玉**  
Size:800x800mm

**柔光大理石**  
Flexible marble

**SKELO FLEXIBLE MARBLE**



**8FX05A 萨尔茨堡灰**  
Size:800x800mm



**8FX10A 时光**  
Size:800x800mm



**8FX11A 塞娜灰**  
Size:800x800mm



J8101流沙金洞石  
Size:800x800mm



J8102金叶米黄  
Size:800x800mm



J8103拉斯维加灰  
Size:800x800mm



J8106莎安娜  
Size:800x800mm



J8107突尼斯灰  
Size:800x800mm



J8108新云灰石  
Size:800x800mm



J8110汉斯  
Size:800x800mm



J8111奥斯汀  
Size:800x800mm



**BUDDHA S WARRIOR ATTENDANT**

**金刚大理石全抛釉**

Size:800x800mm

全抛釉(工程砖)





效果图应用：  
· 地砖：H8P201缅甸黄玉



H8P069卡仕灰  
Size:800x800mm



H8P201缅甸黄玉  
Size:800x800mm



H8P211和田白玉  
Size:800x800mm



H8P256古堡灰  
Size:800x800mm



HC8198土耳其黄玉  
Size:800x800mm



HTG8833和田黄玉  
Size:800x800mm



效果图应用：  
• 地砖：H8P256古堡灰

金刚大理石(全抛釉)  
Thickening

BUDDHA S WARRIOR ATTENDANT



8A097玛雅灰金刚石  
Size:800x800mm



SK9B819爵士白  
Size:800x800mm



SK9B835皇家白玉  
Size:800x800mm



效果图应用：

• 地砖：**H8P211和田白玉**

金刚大理石(全抛釉)  
Thickening

# BUDDHA S WARRIOR ATTENDANT



SK9B854 优雅白玉  
Size: 800x800mm



SK9B876 和田黄玉  
Size: 800x800mm



SK9B882 金丝白玉  
Size: 800x800mm



效果图应用：  
• 地砖: SK8HT11A 英伦幻彩



效果图应用：  
· 地砖：HC8198土耳其黄玉



SK9B891粉水晶  
Size:800x800mm



SK9B895冰晶玉  
Size:800x800mm



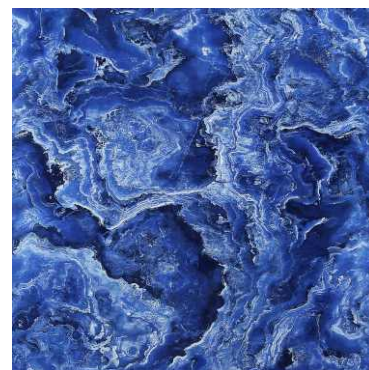
SK9B903意大利砂岩  
Size:800x800mm



SK9B908阿尔贝罗灰  
Size:800x800mm



SK9C816火凤凰  
Size:800x800mm



蓝色海洋SK9C815 SK9C615  
Size:800x800mm 600x600mm





效果图应用：  
· 地砖：HTG8833和田黄玉



雅士白SK9B800 SK9B600  
Size:800x800mm 600x600mm



黄龙玉SK9B801 SK9B601  
Size:800x800mm 600x600mm



绿翡翠SK9B802 SK9B602  
Size:800x800mm 600x600mm



纯白SK9B810 SK9B610  
Size:800x800mm 600x600mm



鱼肚白SK9B817 SK9B617  
Size:800x800mm 600x600mm



祥云黄玉SK9B827 SK9B627  
Size:800x800mm 600x600mm



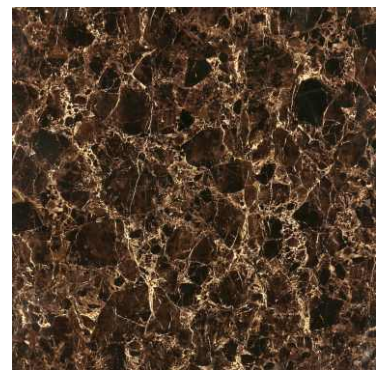
效果图应用：  
• 地砖：SK9B903意大利砂岩



琥珀玉  
SK9B803\_SK9B603\_SK9B1003



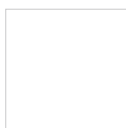
黄金玉  
SK9B888\_SK9B688\_SK9B1088



深啡网  
SK9C806\_SK9C606\_SK9C1006



1000x1000mm



800x800mm



600x600mm

金刚大理石(全抛釉)  
Thickening

# BUDDHA S WARRIOR ATTENDANT



法国灰木纹SK9B863 SK9B644  
SiSixe:800x800mm 600x600mm



天山碧玉SK9B883 SK9B683  
Sixe:800x800mm 600x600mm



纯黑SK9C811 SK9C611  
Sixe:800x800mm 600x600mm



效果图应用：  
• 地砖: SK9B817 鱼肚白



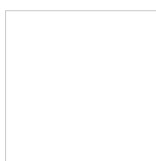
紫罗红  
SK9C808\_SK9C608\_SK9C1008



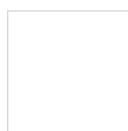
浅啡网  
SK9C809\_SK9C609\_SK9C1009



黑金花  
SK9C813\_SK9C613\_SK9C1013



1000x1000mm



800x800mm



600x600mm

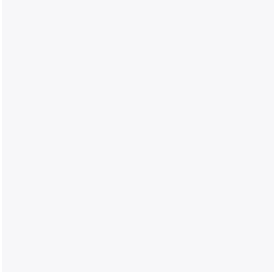


效果图应用：  
• 地砖：H8P069卡仕灰



效果图应用:

• 地砖: 8A097玛雅灰金刚石



6000 纯白  
Size:600x600mm



6001 保加利亚米黄  
Size:600x600mm



6007 黄金玉  
Size:600x600mm



6033 金丝玉石  
Size:600x600mm



6054 雅士白  
Size:600x600mm



6055 卡拉卡白  
Size:600x600mm



6067 法国灰木纹  
Size:600x600mm



6076 水墨白  
Size:600x600mm



6087 意大利砂岩  
Size:600x600mm



6108 古堡灰  
Size:600x600mm



6110 山水白  
Size:600x600mm



6114 鱼肚白  
Size:600x600mm



6123 缅甸黄玉  
Size:600x600mm



6158 意大利林纹  
Size:600x600mm



6165 和田白玉  
Size:600x600mm



6168 土耳其黄玉  
Size:600x600mm



6184 波斯雅  
Size:600x600mm



6187 安德里  
Size:600x600mm



6189 伯爵米黄  
Size:600x600mm



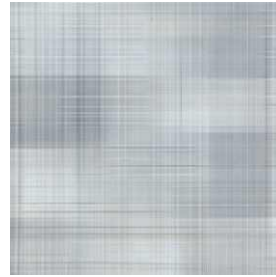
6203 喜马拉雅  
Size:600x600mm



6252比利时白  
Size:600x600mm



6311卡迪夫  
Size:600x600mm



6339印象拉菲  
Size:600x600mm



6687玻利维亚  
Size:600x600mm



6688西西里  
Size:600x600mm



6689欧若拉  
Size:600x600mm



6690巴比伦  
Size:600x600mm



6691月光米黄  
Size:600x600mm

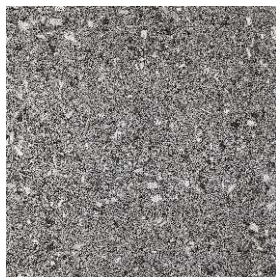
仿古砖系列800x800

series

ANTIQUÉ BRICK SERIES



88A137大颗粒水磨石  
Size:800x800mm



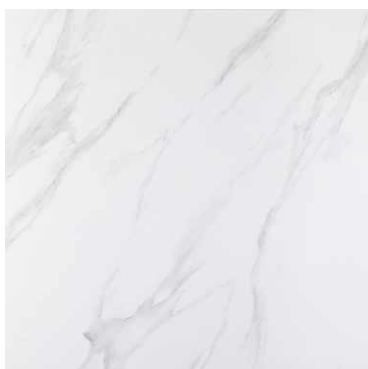
66A137大颗粒水磨石  
Size:600x600mm



88A005保罗米黄  
Size:800x800mm



66A005保罗米黄  
Size:600x600mm



88A057小纹鱼肚白  
Size:800x800mm



66A057小纹鱼肚白  
Size:600x600mm



88A310波尔多  
Size:800x800mm



66A310波尔多  
Size:600x600mm



88A136水磨石  
Size:800x800mm



66A136水磨石  
Size:600x600mm



88A128玛雅米黄  
Size:800x800mm



66A128玛雅米黄  
Size:600x600mm



88A130卡洛灰  
Size:800x800mm



66A130卡洛灰  
Size:600x600mm



88A129云海石  
Size:800x800mm



66A129云海石  
Size:600x600mm





88A115安尼斯黄  
Size:800x800mm



66A115安尼斯黄  
Size:600x600mm



88A117科沃斯  
Size:800x800mm



66A117科沃斯  
Size:600x600mm



88A008曼哈顿灰  
Size:800x800mm



66A008曼哈顿灰  
Size:600x600mm



88A007莫兰灰  
Size:800x800mm



66A007莫兰灰  
Size:600x600mm



88A114奥斯卡  
Size:800x800mm



66A114奥斯卡  
Size:600x600mm



88A126西西里  
Size:800x800mm



66A126西西里  
Size:600x600mm



88A127沙岩  
Size:800x800mm



66A127沙岩  
Size:600x600mm



88A125雅典娜  
Size:800x800mm



66A125雅典娜  
Size:600x600mm

仿古砖系列800x800  
series

ANTIQUE BRICK SERIES



88A140闪电灰  
Size:800x800mm



66A140闪电灰  
Size:600x600mm



88A120莱克灰  
Size:800x800mm



66A120莱克灰  
Size:600x600mm



88A141安娜米黄  
Size:800x800mm



66A141安娜米黄  
Size:600x600mm



88A142缪斯  
Size:800x800mm



66A142缪斯  
Size:600x600mm



88A143帕维亚  
Size:800x800mm



66A143帕维亚  
Size:600x600mm



88A106奥斯米灰  
Size:800x800mm



66A106奥斯米灰  
Size:600x600mm



88A107波斯灰  
Size:800x800mm



66A107波斯灰  
Size:600x600mm



88A119莱卡  
Size:800x800mm



66A119莱卡  
Size:600x600mm

仿古砖系列800x800  
series

ANTIQUE BRICK SERIES



88A105蒂诺米黄  
Size:800x800mm



88A112米希尔  
Size:800x800mm



88A113夏纳  
Size:800x800mm



88A116奥林波斯  
Size:800x800mm



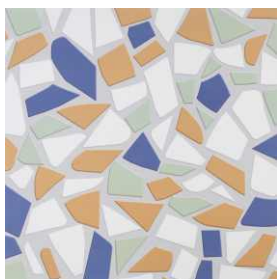
88A118凯特米黄  
Size:800x800mm



88A135小颗粒米黄  
Size:800x800mm

仿古砖系列600x600  
series

ANTIQUE BRICK SERIES



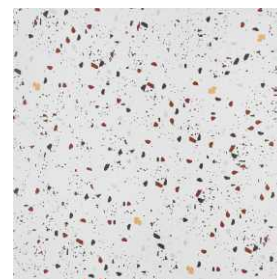
YD719彩色颗粒水磨石  
Size:600x600mm



YD717拼花艺术  
Size:600x600mm



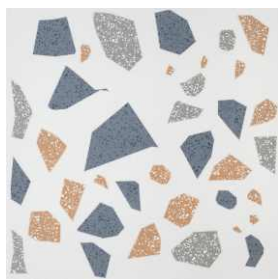
YD083水磨石  
Size:600x600mm



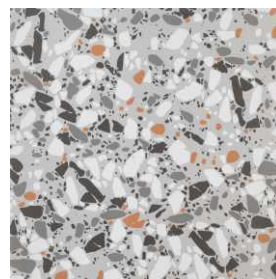
YD082彩色颗粒水磨石  
Size:600x600mm



YD068鱼骨水磨石  
Size:600x600mm



YD065彩色颗粒水磨石  
Size:600x600mm



YD063彩色颗粒水磨石  
Size:600x600mm



YD062星空水磨石  
Size:600x600mm



XY0809复古木纹  
Size:600x600mm



XY0807复古木纹  
Size:600x600mm



XY0806带花复古  
Size:600x600mm



XY0805带花复古木纹  
Size:600x600mm



XY0804带花复古  
Size:600x600mm



XY0803复古木纹  
Size:600x600mm



XY0802复古木纹  
Size:600x600mm



K68057水磨石  
Size:600x600mm



K68318复古木纹  
Size:600x600mm



K68319复古木纹  
Size:600x600mm



K68055水磨石  
Size:600x600mm



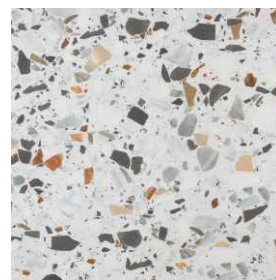
K68056水磨石  
Size:600x600mm



K68015彩色颗粒水磨石  
Size:600x600mm



K68013水磨石  
Size:600x600mm



K68010彩色颗粒水磨石  
Size:600x600mm



K68008水磨石  
Size:600x600mm



K6H006水磨石  
Size:600x600mm



6M509水磨石  
Size:600x600mm



6M508水磨石  
Size:600x600mm



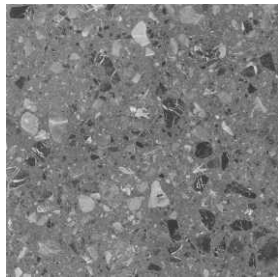
6M505彩色颗粒水磨石  
Size:600x600mm

仿古砖系列600x600

series



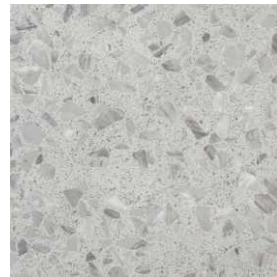
6M501水磨石  
Size:600x600mm



6M007水磨石  
Size:600x600mm



6M006水磨石  
Size:600x600mm



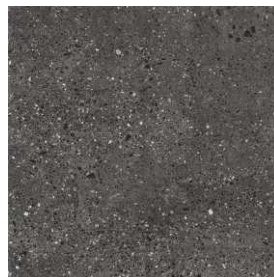
6M005水磨石  
Size:600x600mm



6K301彩色颗粒水磨石  
Size:600x600mm



6K005水磨石  
Size:600x600mm



6H007水磨石  
Size:600x600mm



6H002水磨石  
Size:600x600mm

ANTIQUE BRICK SERIES

全瓷仿古砖系列600x600

series



9A189青石文化浅  
Size:600x600mm



9A190青石文化  
Size:600x600mm



9A191青石文化深  
Size:600x600mm



9126线条  
Size:600x600mm



9321线条  
Size:600x600mm



BN6101全瓷仿古砖哑光  
Size:600x600mm



HS60010水磨石  
Size:600x600mm



9320线条  
Size:600x600mm

ANTIQUE BRICK SERIES



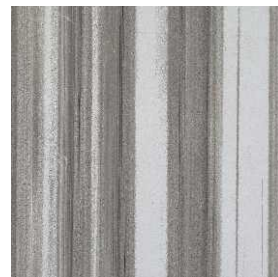
HS60013水磨石  
Size:600x600mm



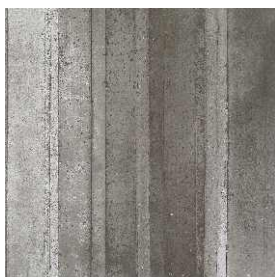
HS60014水磨石  
Size:600x600mm



HS60070海天一线浅  
Size:600x600mm



HS60071海天一线深  
Size:600x600mm



HS60076木纹洞石浅  
Size:600x600mm



HS60077木纹洞石深  
Size:600x600mm



HS60080高格斯水泥砖  
Size:600x600mm



HS60081高格斯水泥砖  
Size:600x600mm



HS60083高格斯水泥砖  
Size:600x600mm



HS60098沙岩  
Size:600x600mm



HS60099沙岩  
Size:600x600mm



LS6002通体砂岩  
Size:600x600mm



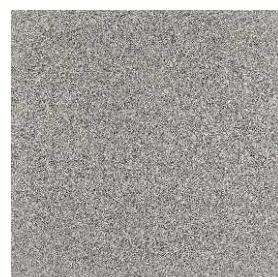
LS6004通体砂岩  
Size:600x600mm



LS6005通体砂岩  
Size:600x600mm



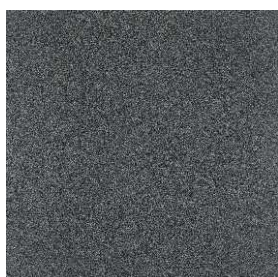
LS6006通体麻点  
Size:600x600mm



LS6008通体麻点  
Size:600x600mm



LS6009通体麻点  
Size:600x600mm



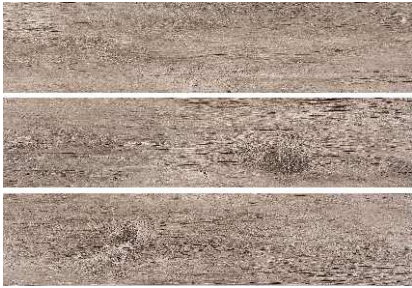
LS6010通体麻点  
Size:600x600mm



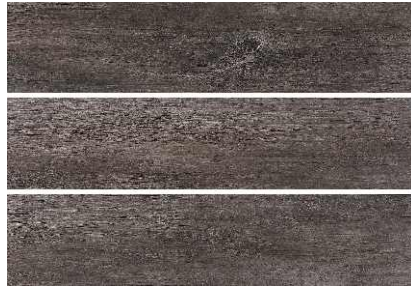
TC68001石纹  
Size:600x600mm



TC68004石纹  
Size:600x600mm



TCR1A29A  
Size:200x900mm



TCR1A29D  
Size:200x900mm



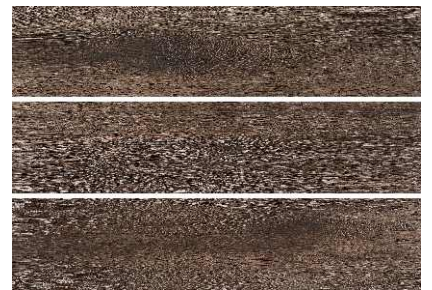
TCR1A29S  
Size:200x900mm



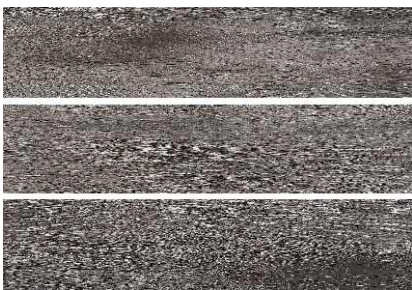
TCR1A29W  
Size:200x900mm



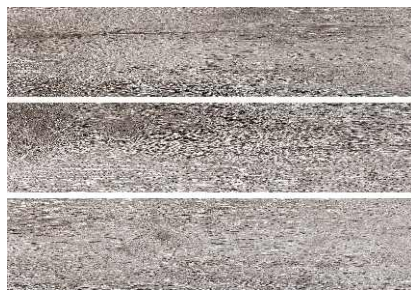
TCR1B29B  
Size:200x900mm



TCR1B29C  
Size:200x900mm



TCR1B29G  
Size:200x900mm



TCR1B29S  
Size:200x900mm



TCR1B29W  
Size:200x900mm



TCRWA29B  
Size:200x900mm



TCRWA29B  
Size:200x900mm



TCRWA29N  
Size:200x900mm



TCRWD29A  
Size:200x900mm



TCRWD29B  
Size:200x900mm



TCRWD29C  
Size:200x900mm



TCRWD29N  
Size:200x900mm



TCRWD29T  
Size:200x900mm



TCRWF29S  
Size:200x900mm



TCRWF29O  
Size:200x900mm



TCRWK29C  
Size:200x900mm



TCRWK29G  
Size:200x900mm



TCRWK29T  
Size:200x900mm



TCRWK29W  
Size:200x900mm



TCRWR29B  
Size:200x900mm





TCRWR29T  
Size:200x900mm



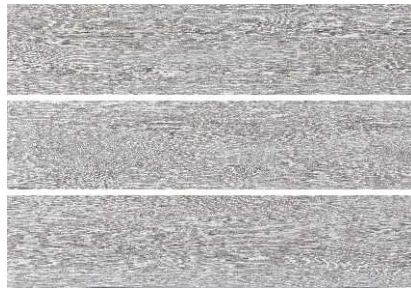
TCRWR290  
Size:200x900mm



TCRWS29B  
Size:200x900mm



TCRWS29C  
Size:200x900mm



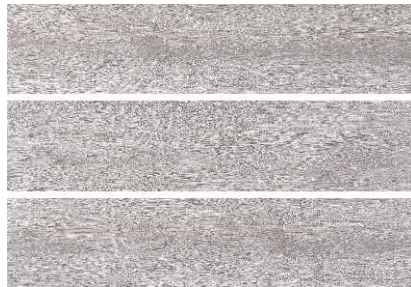
TCRWS29S  
Size:200x900mm



TCRWS29W  
Size:200x900mm



TCRWT29C  
Size:200x900mm



TCRWT29G  
Size:200x900mm



TCRWW29B  
Size:200x900mm



TCRWW29C  
Size:200x900mm



TCRWW29S  
Size:200x900mm

木纹砖系列全瓷直边200x1200  
series

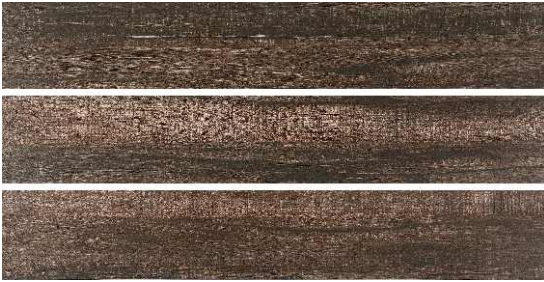
WOOD BLOCKS



TCRWE2120L-6  
Size:200x1200mm



TCRWF2120B-6  
Size:200x1200mm



TCRWF2120C-6  
Size:200x1200mm



TCRWF2120S  
Size:200x1200mm



TCRWF21200-6  
Size:200x1200mm



TCRWR2120B-6  
Size:200x1200mm

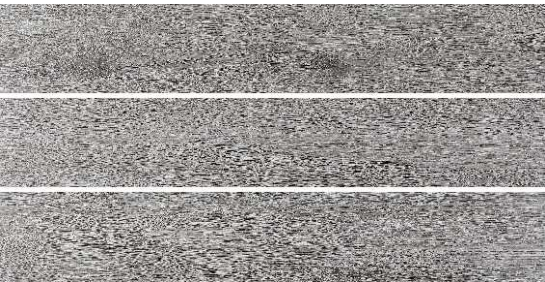


TCRWR2120C-6  
Size:200x1200mm



TCRWR2120G-6  
Size:200x1200mm

木纹砖系列全瓷直边200x1200  
series



TCRWE2120L-6  
Size:200x1200mm



TCRWF2120B-6  
Size:200x1200mm



TCRWF2120C-6  
Size:200x1200mm



TCRWF2120S  
Size:200x1200mm

WOOD BLOCKS

木纹砖系列150x800  
series



ET28132  
Size:150x800mm



F815001  
Size:150x800mm



F815002  
Size:150x800mm

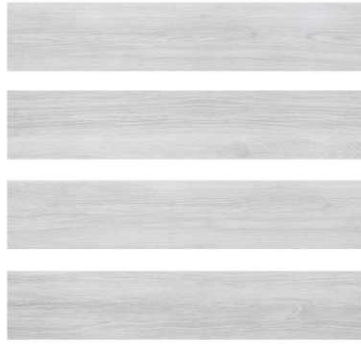
WOOD BLOCKS

木纹砖系列150x800  
series

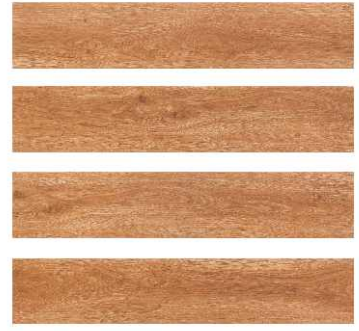
WOOD BLOCKS



F815003  
Size: 150x800mm



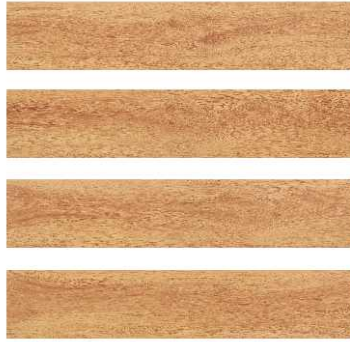
F815004  
Size: 150x800mm



FA8056A  
Size: 150x800mm



FA8056B  
Size: 150x800mm



FA8505  
Size: 150x800mm



FA8517  
Size: 150x800mm

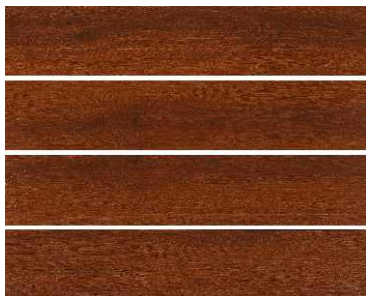


FM8001  
Size: 150x800mm

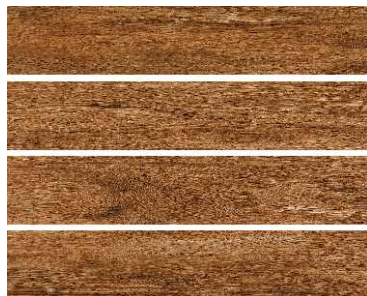
木纹砖系列150x800

series

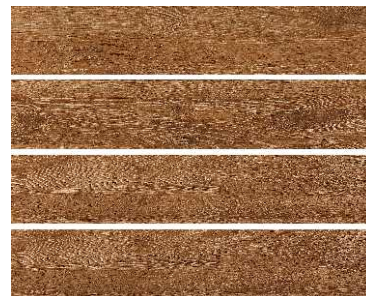
WOOD BLOCKS



8G015红色鸡翅木  
Size:150x800mm



8557花黎木  
Size:150x800mm



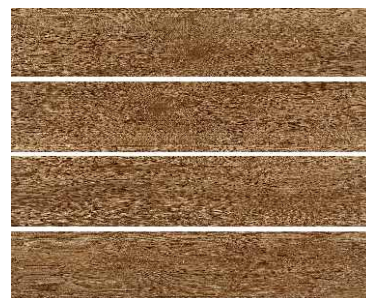
8582花黎木  
Size:150x800mm



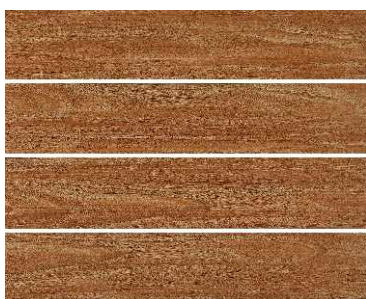
8584花黎木  
Size:150x800mm



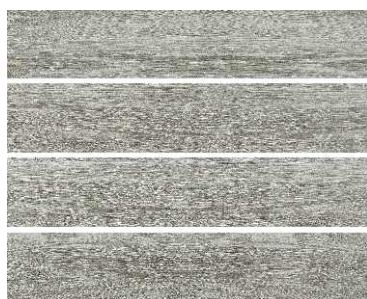
8586花黎木  
Size:150x800mm



58820中灰色金丝柚木  
Size:150x800mm



58824木红色枫木  
Size:150x800mm



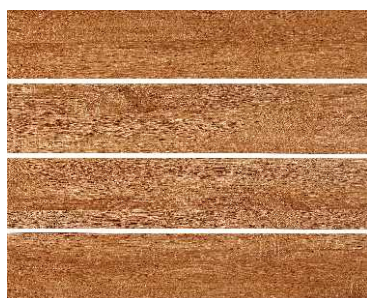
SJ8103烟灰色原木  
Size:150x800mm



SJ18202黄红色缅甸香木  
Size:150x800mm



SJ18206米黄缅甸香木  
Size:150x800mm



SJ18207浅红色缅甸香木  
Size:150x800mm



SJ18209棕灰色缅甸香木  
Size:150x800mm



AP12002 木纹砖  
Size: 150x1000mm



AP95002 原木  
Size: 150x900mm



AP12014 木纹砖  
Size: 150x1000mm



AP95014 深灰\_木纹砖  
Size: 150x900mm



AP12015 木纹砖  
Size: 150x1000mm



AP95015 浅灰\_木纹砖  
Size: 150x900mm



AP12016 木纹砖  
Size: 150x1000mm



AP95016 中灰色\_木纹砖  
Size: 150x900mm



AP12001木纹砖  
Sixe:150x1000mm



AP95001米黄\_木纹砖  
Sixe:150x900mm



AP12006木纹砖  
Sixe:150x1000mm



AP95006米白木纹砖  
Sixe:150x900mm



AP12007木纹砖  
Sixe:150x1000mm



AP95007米灰\_木纹砖  
Sixe:150x900mm



AP12003木纹砖  
Sixe:150x1000mm



AP95003原木\_木纹砖  
Sixe:150x900mm



AP12004木纹砖  
Sixe:150x1000mm



AP95004红色\_木纹砖  
Sixe:150x900mm



AP12005木纹砖  
Sixe:150x1000mm



AP95005铁红\_木纹砖  
Sixe:150x900mm



木纹砖系列150x900  
series

WOOD BLOCKS



F159021  
Size: 150x900mm



F915002  
Size: 150x900mm



F915001  
Size: 150x900mm



F915003  
Size: 150x900mm



F915005  
Size: 150x900mm



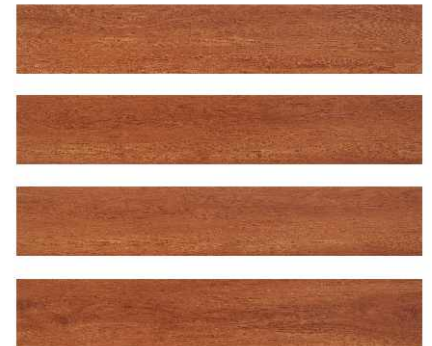
FA9032  
Size: 150x900mm



FA9056C  
Size: 150x900mm



FA9610  
Size: 150x900mm



FA9612  
Size: 150x900mm



FC9608  
Size: 150x900mm



FP91504  
Size: 150x900mm



FP91540  
Size: 150x900mm



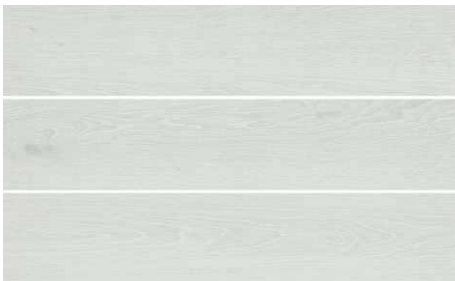
**D21101**  
Size:200x1000mm



**D21102**  
Size:200x1000mm



**D21103**  
Size:200x1000mm



**D21104**  
Size:200x1000mm



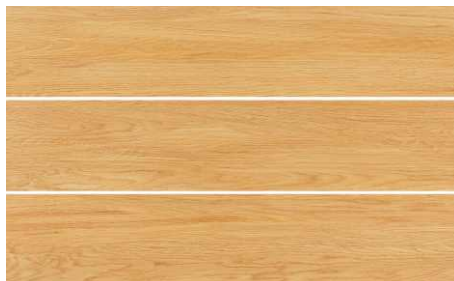
**D21201**  
Size:200x1000mm



**D21202**  
Size:200x1000mm



**D21203**  
Size:200x1000mm



**D21301**  
Size:200x1000mm



**D21302**  
Size:200x1000mm



**D21501**  
Size:200x1000mm



**D21502**  
Size:200x1000mm



**D21503**  
Size:200x1000mm



D122007  
Size:200x1200mm



D122008  
Size:200x1200mm



D122009  
Size:200x1200mm



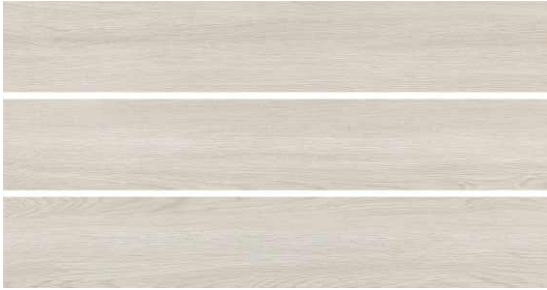
D122010  
Size:200x1200mm



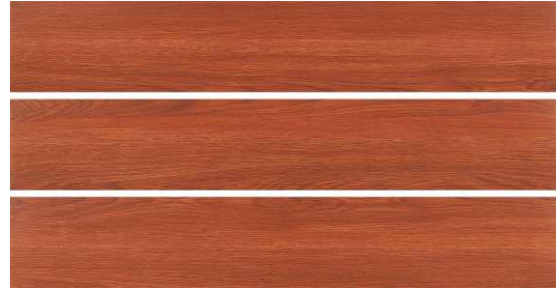
D122011  
Size:200x1200mm



D122012  
Size:200x1200mm



D122001  
Size:200x1200mm



D122002  
Size:200x1200mm



D122003  
Size:200x1200mm



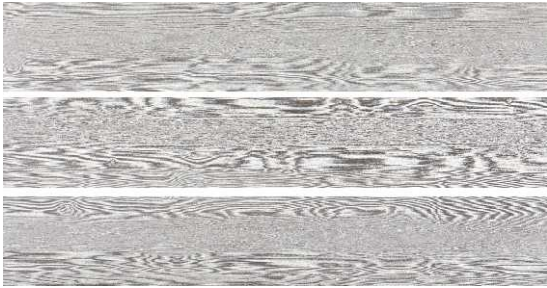
D122004  
Size:200x1200mm



D122005  
Size:200x1200mm



D122006  
Size:200x1200mm



AP12201 金丝楠木  
Size: 200x1200mm



AP12202 金丝楠木  
Size: 200x1200mm



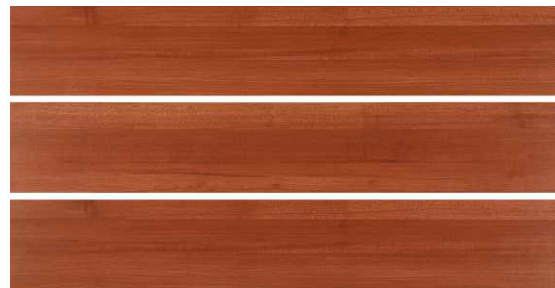
AP12206 缅甸樟木  
Size: 200x1200mm



AP12207 缅甸樟木  
Size: 200x1200mm



AP12209 缅甸樟木  
Size: 200x1200mm



AP12210 泰国原木  
Size: 200x1200mm



AP12211 泰国原木  
Size: 200x1200mm



AP12214 泰国原木  
Size: 200x1200mm